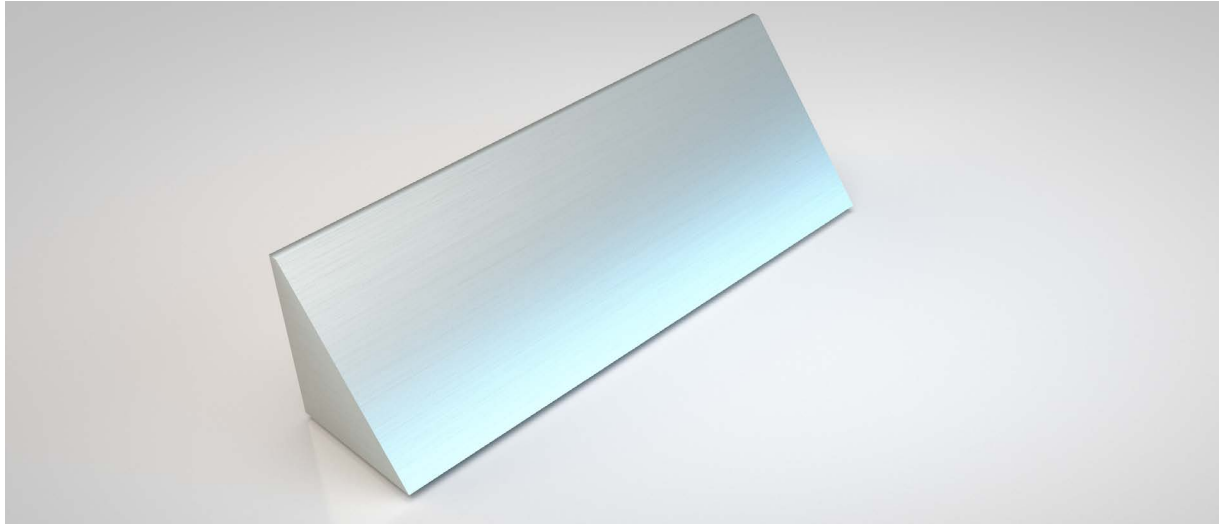


## SECURITY COWL

NORSEAL



### Application

Doorsets incorporating a letterplate

### Fixing

Screw-fixed

### Performance

Benefits letterbox security by obstructing views from the outside, preventing manipulation of locks, and limiting attacks through the letterbox flap.

### Material

Aluminium

### Size (mm)

340 - for use with 306mm overall size letterplates maximum

### Colour

Satin Silver (**S**) / Satin Gold (**G**)

### Order codes

LET/COWL/ + Colour eg. LET/COWL/S

### Dimensions

