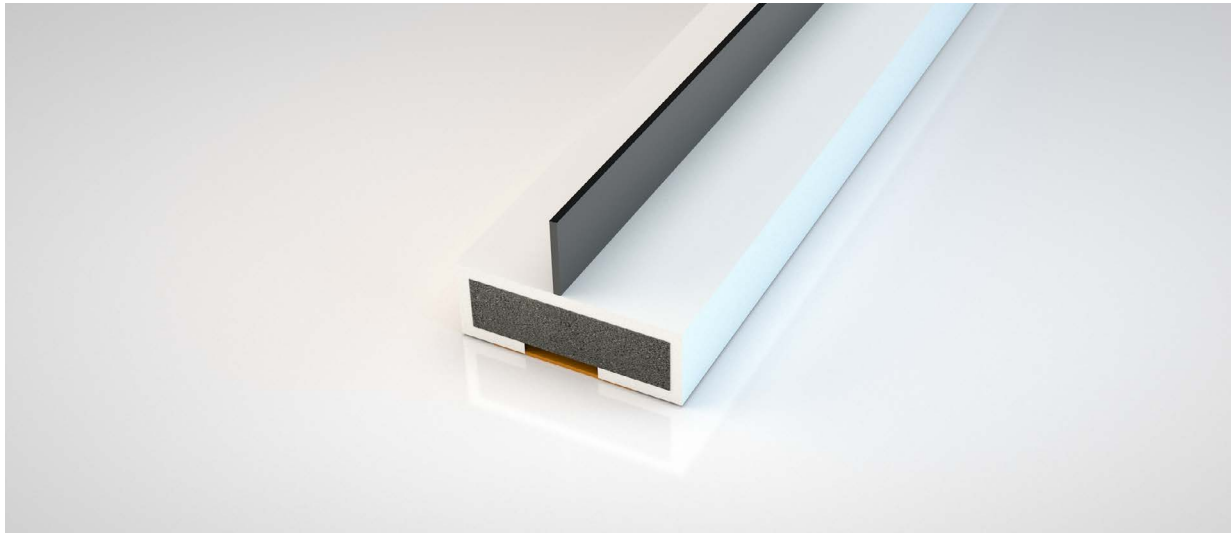


RIGID BOX - SINGLE FLIPPER

PYROPLEX



Application

Fire and smoke resisting timber doorsets - edges and frames

Fixing

Self adhesive, friction fit

Performance

Fire tested to BS 476-20:22 & BS EN 1634-1
Smoke tested to BS 476-31.1 & BS EN 1634-3
Certifire CF822

Material

Intercalated Graphite

Length (mm)

2100

Sizes (mm)

10x4, 15x4, 20x4

Colours

Black (**BK**) / Brown (**B**) / White (**W**) / Cream (**C**) / Grey (**G**) / Other colours on application

Dimensions



Order codes

Size + SF + Colour

eg. 104SFBK (10x4mm, Black)

 5 Regents Drive
Prudhoe
Northumberland
NE42 6PX

 norseal.co.uk

 sales@norseal.co.uk

 01661 830088

Registered in Companies House Cardiff No. 04317595 VAT Reg. No. 733 9466 08