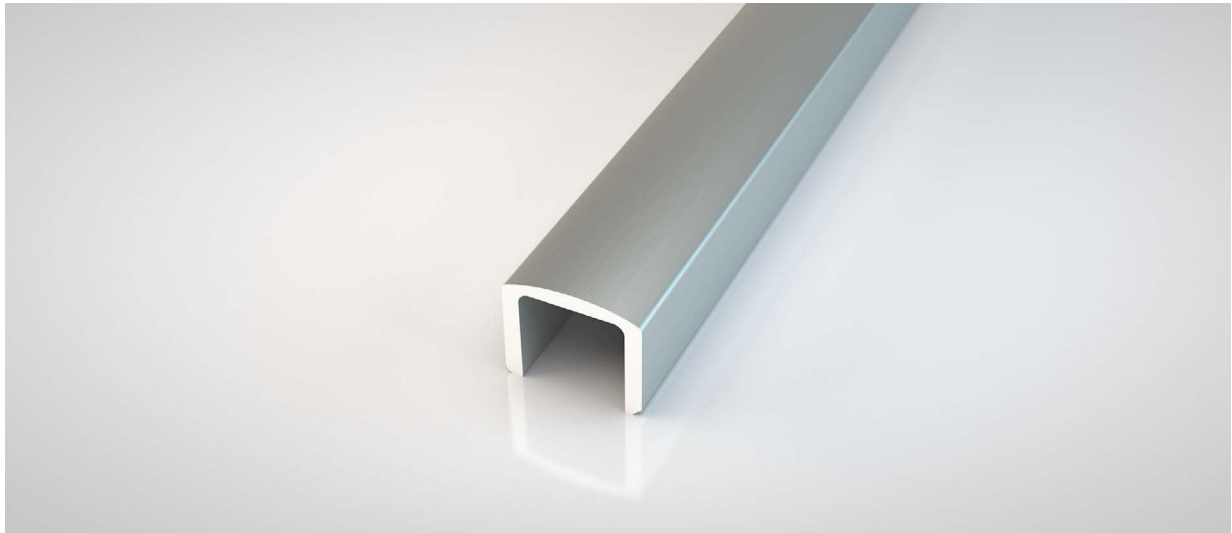


TYPHOON - SP

SEALMASTER



Application

Edges of glass doors (Use with SN)

Fixing

Bonded with adhesive (not supplied)

Material

Aluminium

Length (mm)

2100

Glass thickness (mm)

10-12 (neoprene packing required for 10-11 glass)

Maximum gap coverage (mm)

2.5 protrusion.

Colours

Satin Silver / Satin Gold

Order codes

SPS-2.1 (Satin Silver, 2100mm)

SPG-2.1 (Satin Gold, 2100mm)

Dimensions



 5 Regents Drive
Prudhoe
Northumberland
NE42 6PX

 norseal.co.uk

 sales@norseal.co.uk

 01661 830088

Registered in Companies House Cardiff No. 04317595 VAT Reg. No. 733 9466 08