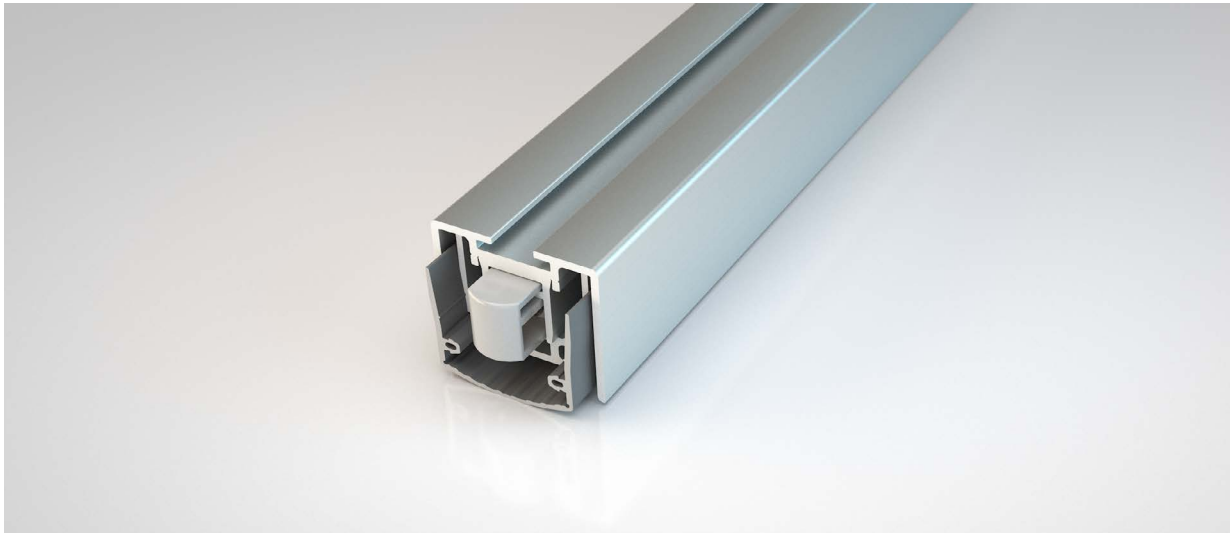


## STADI LD-24/20 WS

ATHMER



### Application

Bottom edge of acoustic metal doorsets

### Fixing

Rebated, held in place with angle brackets

### Performance

Acoustically tested in accordance with  
BS EN ISO 10140-2  
Delayed action drop

### Material

Aluminium (Mill finish), Silicone gasket (Grey)

### Standard lengths (mm)

750, 900, 1050, 1200

### Minimum / Maximum length (mm)

635 / 1600

### Maximum gap coverage (mm)

16

### Cutback (mm)

150

### Actuation

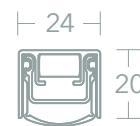
Single

### Order codes

**1-951- + Length (4 digits)** eg. 1-951-0750 (750mm)

Other lengths available on application

### Dimensions



### Delayed action drop

To avoid pressurisation when closing the door, selected Stadi's are available with an optional mechanism, which delays the dropping of the seal. A combination of damping cylinder and spring extends the closing time of the seal to around 6 to 8 seconds. This means that air can be dispelled during this time, making the door suitable for airlock situations. When opened, the seal moves up again quickly without needlessly rubbing against the floor.

 5 Regents Drive  
Prudhoe  
Northumberland  
NE42 6PX

 [norseal.co.uk](http://norseal.co.uk)

 [sales@norseal.co.uk](mailto:sales@norseal.co.uk)

 01661 830088

Registered in Companies House Cardiff No. 04317595 VAT Reg. No. 733 9466 08