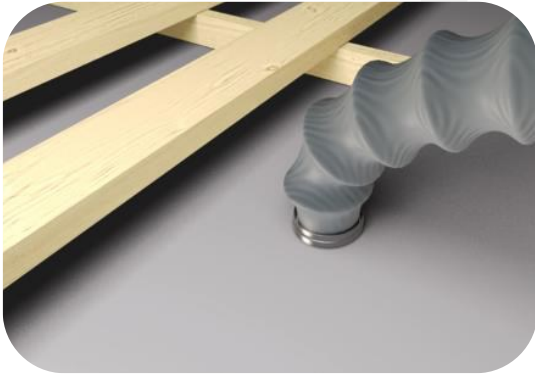


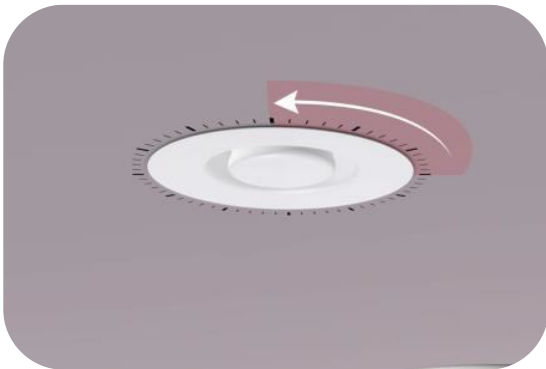
Fitting Instructions



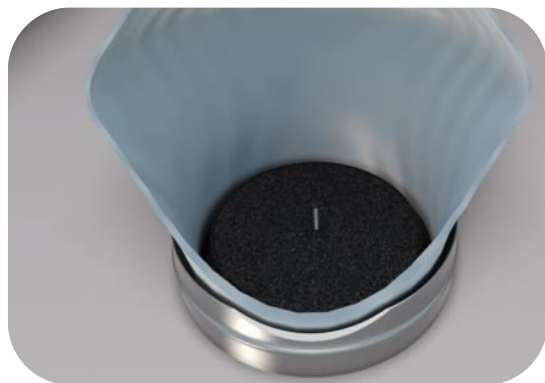
- Cut hole in ceiling to suit the outside diameter of the air valve mounting ring
- Fix the air valve to the ceiling via the screw holes in the valve



- Attach ducting onto the air valve mounting ring



- Fit the body of the valve into the mounting ring with a quarter turn twist
- Set inner cone clearance to provide required air flow rate (max. 12mm)



- Ensure the air valve is fitted snugly within the ceiling with no gaps or voids
- The penetration is then sealed against the spread of fire and the fire rating

Test Data

Report Type	Fire Test Lab	Report Number	Construction	Fire Rating
Fire Test	The Building Test Centre	BTC 18074F	Timber Joist/GTEC Fire Board Floor	60
Fire test	Chiltern Fire	IF10090	Plasterboard	60
Fire Test	Warrington Fire	WF 394530	Metal Web Joist	30